



EROAD Proof of Service

EROAD Proof of Service provides a new 'gold standard' for contract reporting to help your business build strong and sustainable customer relationships.

EROAD Proof of Service simplifies contract reporting to help you with invoicing, retention and dispute resolution for civil maintenance or construction engagements.

The Proof of Service report delivers a verifiable record of auxiliary equipment activity based on EROAD's highly accurate tracking devices - Ehubo2 and ETrack Wired.

Once the vehicle's auxiliary equipment is connected to EROAD's hardware – the report can deliver an accurate, verifiable, record of service to your customers.

The Proof of Service report delivers a comprehensive description of civil contracting activity such as pavement gritting, sweeping, snow clearance, mowing, road sweeping, road marking or of construction activity such as digging, rolling or grading.

For a completely frictionless experience, you have the option to provide the Contract Owner with a log-in to view activity completed in their own portal view.

KEY BENEFITS

Accurate geo-location data

Provide your customers with verifiable proof that contract conditions and services have been completed

Streamlined contract reporting

A highly accurate record of auxiliary equipment activity, drastically reducing the time taken for contract reporting

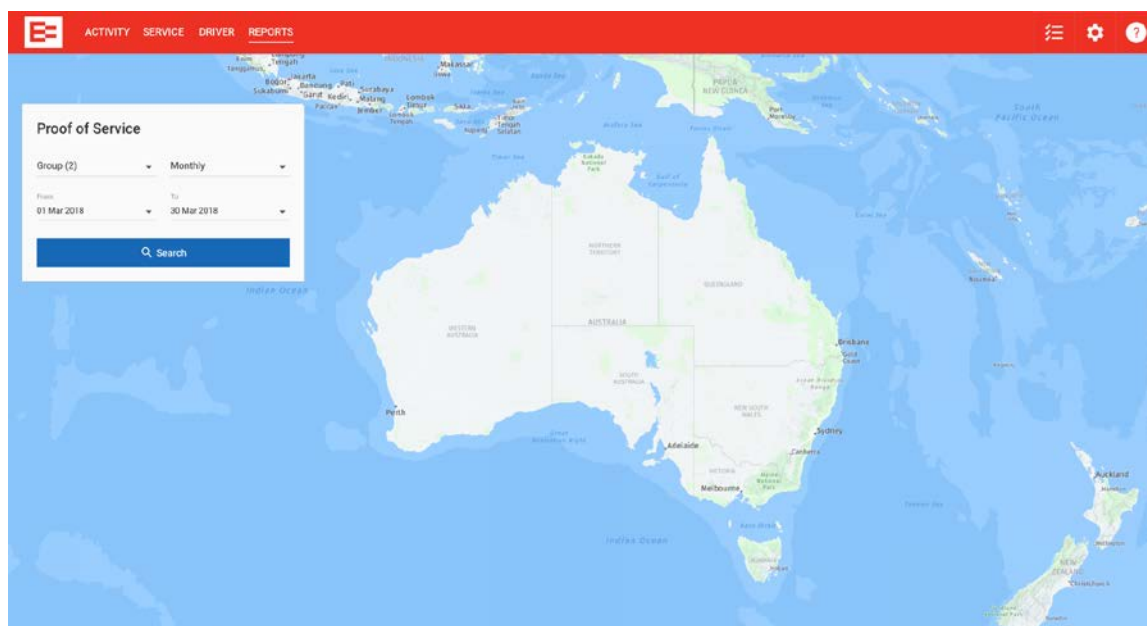
Map visualisation

For quick proof of activity across a day, week or month

Customer visibility

Provide your customers with a log-in to view activity completed in their own portal view

Accurate, verifiable records of service for auxiliary equipment activity



EROAD Proof of Service

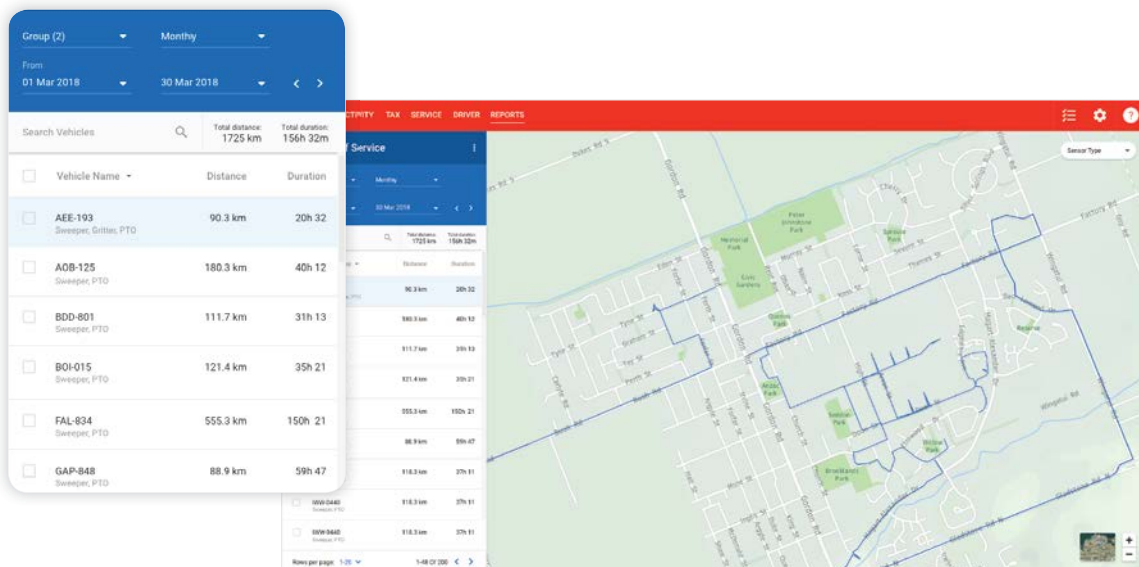
Developed specifically for the Civil Contracting and Construction market this report will enable your customers to log in and view activity against their contracts.

Proof of Service simplifies contract manager reporting - delivering an accurate, verifiable record of service to your customer.

The report delivers a comprehensive history of all sensor events as well as a map visualisation of auxiliary equipment usage.

KEY FEATURES

- › Visualisation of auxiliary equipment activity on a map (base map layer and satellite map layer) clearly denoting activity. Activity can be viewed across a day, week or month, for selected vehicles or groups.
- › CSV extract including vehicle, activity type, data/time, road location start - end, distance and average speed for granular proof of service reporting.
- › Proof of Service Login available for your customer, to eliminate reporting overheads.



One end-to-end solution

EROAD offers a complete suite of user-friendly compliance, regulatory and telematics solutions, including driver safety tools and reports, vehicle maintenance, and fuel and fleet utilisation reporting. Security and accuracy of data is of primary concern in EROAD's independently tested platform, you can rely on these to provide credible insight and competitive advantage.

See www.eroad.com.au, or call **1800 437 623** for more information.