

# EROAD Private Mode

The Private Mode setting on Ehubo2 is designed with drivers in mind. The Private Mode setting is for the protection of their personal privacy when driving a company vehicle in personal time. Drivers are in control of this setting, so it is important for them to know what it means and how to use it.

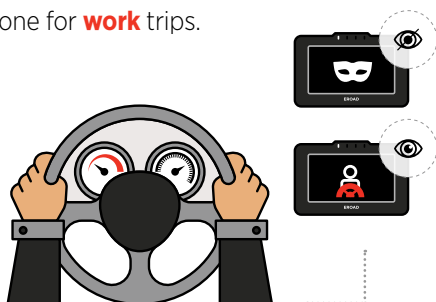


## EROAD

### HERE'S WHAT YOU NEED TO KNOW:

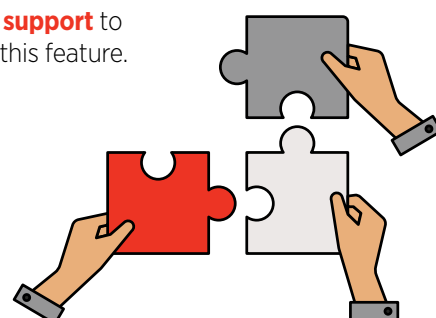
1

Ehubo2 operates in two modes. One for **private** trips and one for **work** trips.



2

Drivers will require **training, advice** and **support** to use this feature.



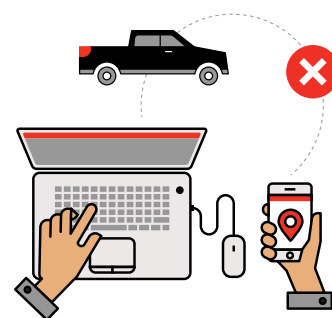
3

Drivers should select Private Mode **before** they drive a company vehicle in personal time.



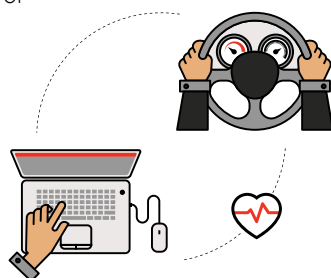
4

GPS tracking data is **turned off** in Private Mode and cannot be seen or recorded.



5

It creates a **healthy**, transparent work environment for management and drivers.



**Want to learn about the privacy implications for employers utilising vehicle telematics within Australia?**

**DOWNLOAD OUR FREE REPORT**