



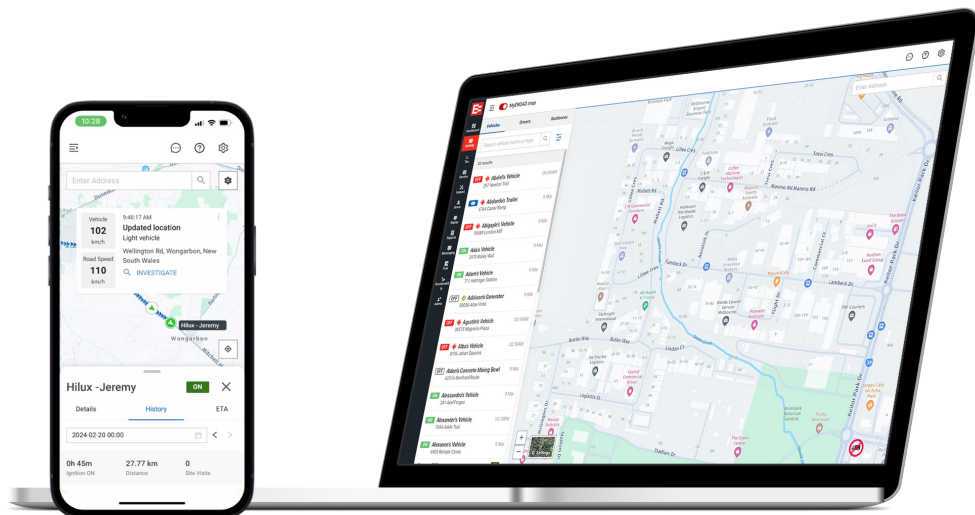
**EROAD**

# MyEROAD Fleet Map

## The ultimate tool to help enhance your fleet operations

**Save time, maximise fleet productivity and enhance customer service with EROAD's vehicle location tracking, activity monitoring and intelligent GPS route planner app.**

EROAD provides GPS tracking for improved visibility across your fleet, this gives you high-resolution, instant, and accurate vehicle tracking. By knowing the location of your vehicles at any given moment, you have peace of mind in knowing where your fleet is located. The integrated route planning and estimated time of arrival features enable you to optimise routes, manage jobs, and dispatch vehicles, to achieve productivity improvements that help keep customers happy, drivers safe, and business profitable.



### TRANSPORT POINTS OF INTEREST

See points of interest relevant to transport and logistics, including ports, airport cargo, rest stops, delivery entrances, and loading docks.



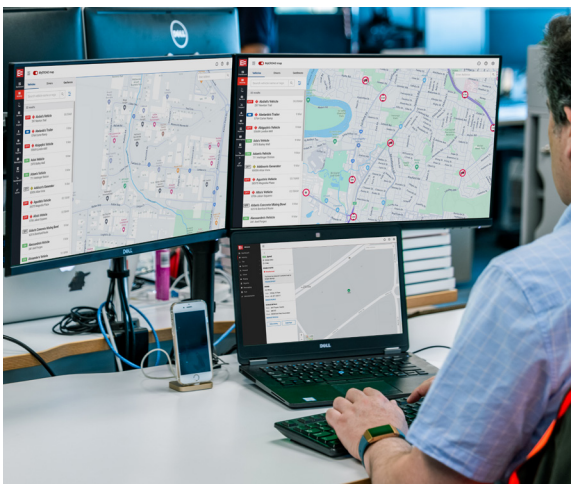
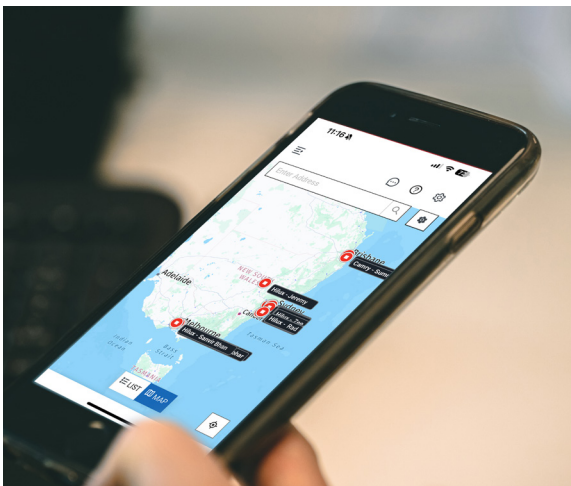
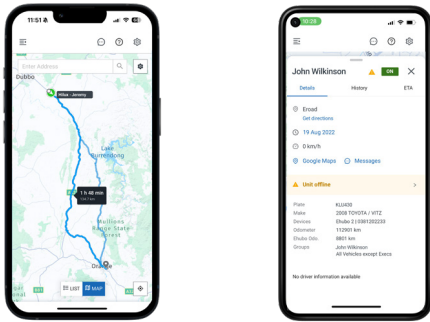
### COMPLY WITH ROAD RULES

View vehicle height, width and weight restrictions on the map. Toll roads and highways are also highlighted.



### ENSURE DRIVER SAFETY

Locate drivers and view vehicle status. Investigate trips or driving alerts.



## SPECIFICATIONS

- ✓ Accurately and easily track your fleet wherever you are – on your mobile, tablet, computer, or a wall display in a call centre.
- ✓ See a display of up to 10,000 vehicles/assets on the map at once.
- ✓ Provides intelligent clustering, to ensure you can see the level of information that matters to you.
- ✓ Easily view vehicle details, the Ehubo status, current speed, drivers name, and drivers contact details.
- ✓ See where your vehicles have been, this includes: journey time, distance and the last location.
- ✓ ETA tool gives estimated arrival times based on current location, live traffic and route restrictions.
- ✓ Vehicle History feature makes it easy to investigate up to the minute information about where your vehicles have been, and what they've been doing.
- ✓ Route Planner provides compliant and efficient route options based on vehicle dimensions, load type, obstacles to avoid and live traffic.
- ✓ Truck, traffic & satellite map layer displays physical and legal restrictions and warning information by road.
- ✓ Ability to create geofences to monitor restricted and high risk routes.  
Receive email notifications if a driver enters and leaves a restricted area.
- ✓ Road network data is obtained from various sources for improved accuracy.  
Posted speed changes are updated every two weeks, with a full data refresh every three months.

### About EROAD

EROAD develops technology solutions (products and services) that manage vehicle fleets, support regulatory compliance, improve driver safety and reduce the costs associated with driving. EROAD also provides valuable insights and data analytics to universities, government agencies and others who research, trial and evaluate future transport networks. This data enables those who use the roads to influence the design, management and funding of future transport networks.

See [www.eroad.com.au](http://www.eroad.com.au), or call **1800 437 623** for more information.