



EROAD

Clarity Edge auxiliary **Fatigue Camera**

Detect fatigue events by pairing Clarity Edge and its auxiliary Fatigue Camera. In addition to monitoring driver distraction and other risky behaviours, the Fatigue Camera detects and alerts drivers to subtle, and potentially dangerous signs of fatigue, such as frequent blinking or eye closure.

Fatigue isn't just 'falling asleep at the wheel'

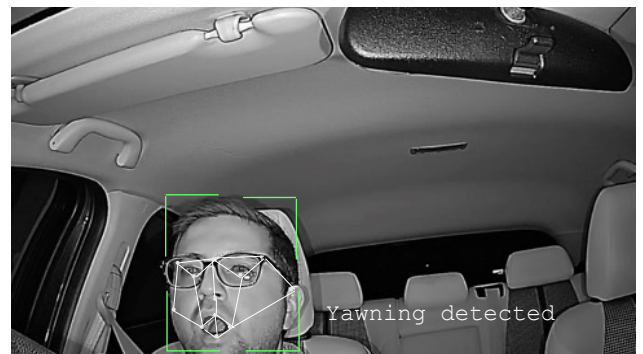
Long before falling asleep, a driver is likely to experience more subtle signs of fatigue, including recurrent yawning, frequent blinking and eye closure that may last 2 or more seconds. They may also be more easily distracted.

Clarity Edge paired with the Auxiliary Fatigue Camera brings together three separate monitoring systems in one – Road, Driver and Fatigue.

Nearly 20%¹ of fatal road crashes are caused by driver fatigue. By detecting and alerting drivers to more signs of distraction and fatigue, fleets can implement a proactive approach to help prevent more serious fatigue events.

Help protect your drivers, and your business

Drowsiness or fatigue has a severe impact on several critical aspects of driving. Reduced attention, vigilance and reaction times can lead to more erratic driving behaviour.



Reduce Accidents

Intervene before a more serious fatigue event occurs



Better Detect Risk

Improve risk mitigation efforts



Protect Drivers

Identify patterns to help drivers build healthier habits

¹ <https://www.ncbi.nlm.nih.gov/pmc/articles/PMC9916394/#:~:text=In%20Australia%2C%20nearly%2020%25%20of,among%20truck%20drivers%20%5B21%5D>



KEY FEATURES

- Yawning
- Eye closure > 2 seconds
- Distraction
- Frequent blinking
- Ability to see through sunglasses
- In-cab voice alerts
- Manager email notifications
- Automated tagging of behaviours

SPECIFICATIONS

Online video resolution	<ul style="list-style-type: none"> • Triggered clips:: D1 @15fps • Requested clips:: 800p @20fps
Fatigue AI	DMS (driver monitoring system): Yawning, distraction, eye closure > 2 seconds, frequent blinking
Installation	Mounts to A-pillar
Dimensions	97.93 × 45.27 mm, including mount
Other	Requires connection to Clarity Edge

